



BLACKMOON

www.switch-made.com

B
L
A
C
K
M
O
O
N



ROUND

ADJUSTABLE

CEILING MOUNTED

SQUARE

TRACK

SUSPENDED



ROUND



BLACKMOON 3
INT03026

System Power	: 3 W
Luminaire Efficacy	: 70 lm/W (@4000K, CRI 90)
UGR	: <10
Beam Angle	: 18°
IP Rating	: IP44
Dimension	: ø 44mm x H 55mm
Cutout	: ø 40mm



BLACKMOON 8
INT02029

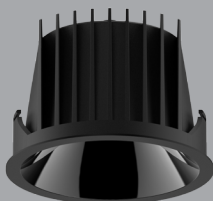
BLACKMOON 10
INT02030

System Power	: 8 W / 10 W
Luminaire Efficacy	: 90 lm/W (@4000K, CRI 90)
UGR	: <19
Beam Angle	: 24°, 60°
IP Rating	: IP44
Dimension	: ø 65mm x H 71mm
Cutout	: ø 60mm



BLACKMOON 14
INT02034

System Power	: 14 W
Luminaire Efficacy	: 90 lm/W (@4000K, CRI 90)
UGR	: <19
Beam Angle	: 38°, 45°
IP Rating	: IP44
Dimension	: ø 83mm x H 84mm
Cutout	: ø 78mm



BLACKMOON 20
INT02040

BLACKMOON 28
INT02037

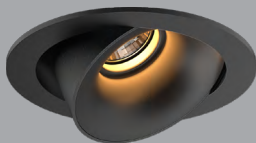
System Power	: 20 W / 28W
Luminaire Efficacy	: 107 lm/W (@4000K, CRI 90)
UGR	: <14
Beam Angle	: 40°, 60°
IP Rating	: IP54
Dimension	: ø 157mm x H 105mm
Cutout	: ø 150mm

ROUND ADJUSTABLE



BLACKMOON 8 ADJ.
INT06019

System Power	:	8 W / 10 W
Luminaire Efficacy	:	90 lm/W (@4000K, CRI 90)
UGR	:	<19
Beam Angle	:	24°, 40°
IP Rating	:	IP20
Dimension	:	ø 86mm x H 64mm
Cutout	:	ø 80mm

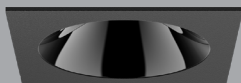


BLACKMOON 14 ADJ.
INT06029

System Power	:	14 W
Luminaire Efficacy	:	90 lm/W (@4000K, CRI 90)
UGR	:	<19
Beam Angle	:	24°, 40°
IP Rating	:	IP20
Dimension	:	ø 105mm x H 80mm
Cutout	:	ø 100mm

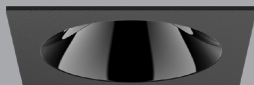


SQUARE



BLACKMOON 8-S
INT03089

System Power : 8 W / 10 W
Luminaire Efficacy : 90 lm/W (@4000K, CRI 90)
UGR : <19
Beam Angle : 24°, 40°, 60°
IP Rating : IP44
Dimension : 65 x 65mm x H 71mm
Cutout : ø 60mm



BLACKMOON 10-S
INT03090

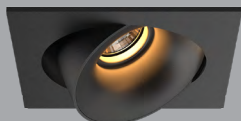
System Power : 14 W
Luminaire Efficacy : 90 lm/W (@4000K, CRI 90)
UGR : <19
Beam Angle : 24°, 36°, 60°
IP Rating : IP44
Dimension : 83 x 83mm x H 84mm
Cutout : ø 78mm

SQUARE ADJUSTABLE



BLACKMOON 8-S ADJ.
INT03097

System Power : 8 W / 10 W
Luminaire Efficacy : 90 lm/W (@4000K, CRI 90)
UGR : <19
Beam Angle : 24°, 40°, 60°
IP Rating : IP20
Dimension : 86 x 86mm x H 64mm
Cutout : ø 80mm



BLACKMOON 10-S ADJ.
INT03098

BLACKMOON 14-S ADJ.
INT03099

System Power : 14 W
Luminaire Efficacy : 90 lm/W (@4000K, CRI 90)
UGR : <19
Beam Angle : 24°, 40°, 60°
IP Rating : IP20
Dimension : 105 x 105mm x H 80mm
Cutout : ø 100mm

SQUARE II



BLACKMOON 8 - II

INT03094

System Power	:	2 x 8 W / 10 W
Luminaire Efficacy	:	90 lm/W (@4000K, CRI 90)
UGR	:	<19
Beam Angle	:	24°, 40°, 60°
IP Rating	:	IP20
Dimension	:	L 170 x W 86 x H 63mm
Cutout	:	L 165 x W 80mm

BLACKMOON 10 - II

INT03095

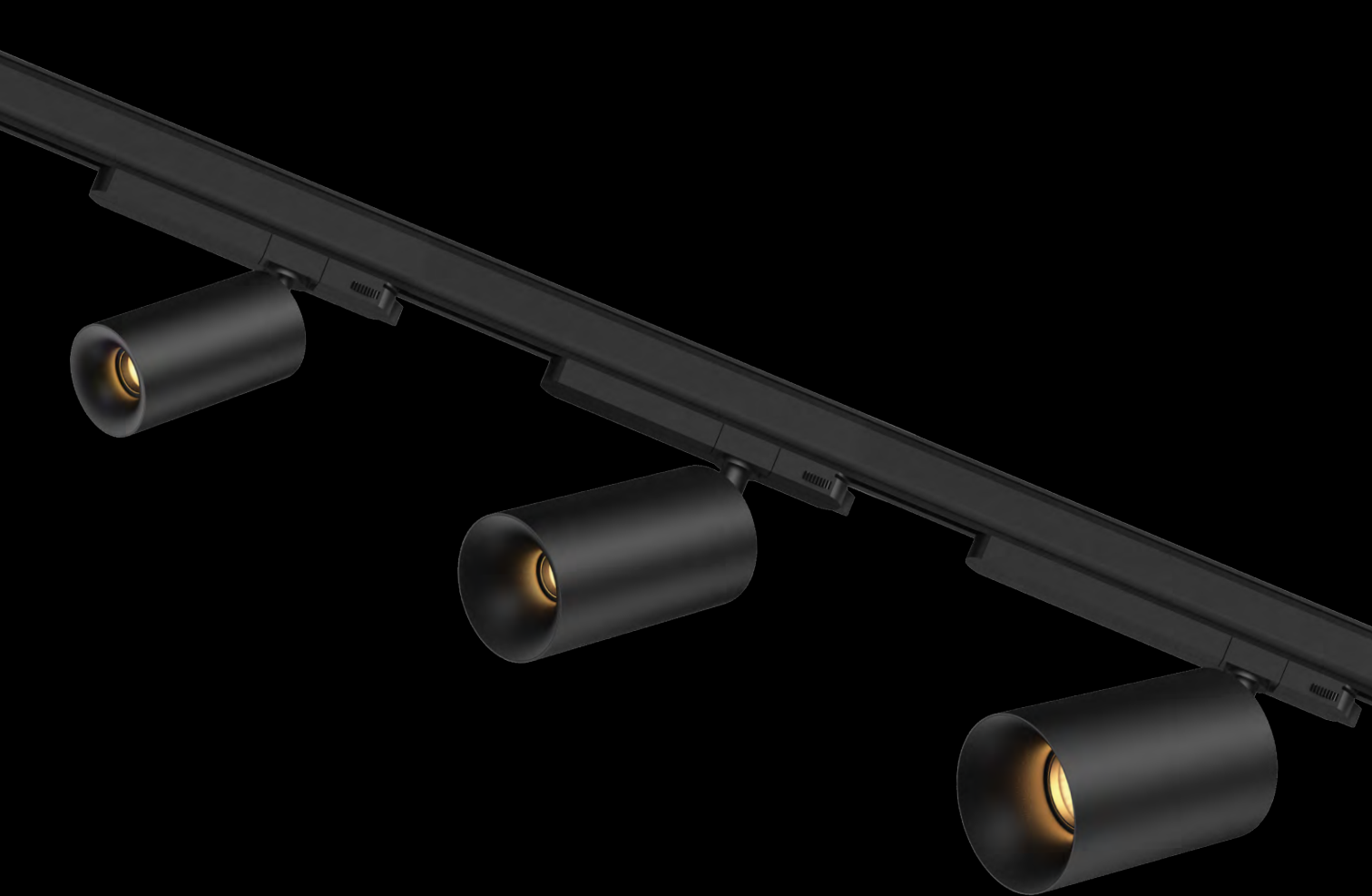


BLACKMOON 14 - II

INT03096

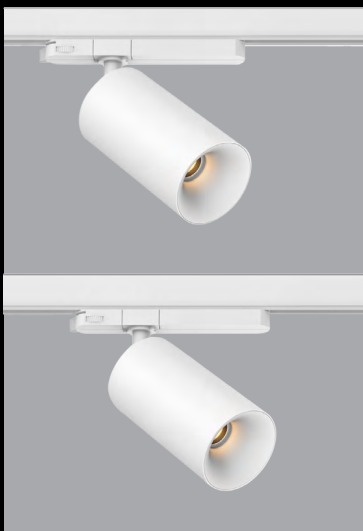
System Power	:	2 x 14 W
Luminaire Efficacy	:	90 lm/W (@4000K, CRI 90)
UGR	:	<19
Beam Angle	:	24°, 40°
IP Rating	:	IP20
Dimension	:	L 215 x W 105 x H 80mm
Cutout	:	L 205 x W 100mm





TRACK

TRACK



BLACKMOON 8 TRACK

INT03023

System Power	: 8 W / 10 W
Luminaire Efficacy	: 90 lm/W (@4000K, CRI 90)
UGR	: <19
Beam Angle	: 24°, 40°
IP Rating	: IP20
Dimension	: ø60 x H 120 mm

BLACKMOON 10 TRACK

INT03109

BLACKMOON 14 TRACK

INT03110

System Power	: 14 W / 20 W
Luminaire Efficacy	: 90 lm/W (@4000K, CRI 90)
UGR	: <19
Beam Angle	: 24°, 40°
IP Rating	: IP20
Dimension	: ø75 x 140 mm

BLACKMOON 20 TRACK

INT03111





CEILING MOUNTED

CEILING MOUNTED



BLACKMOON 8 - R

INT03100

CEILING MOUNTED

System Power : 8 W / 10 W
Luminaire Efficacy : 90 lm/W (@4000K, CRI 90)
UGR : <19
Beam Angle : 24°, 40°
IP Rating : IP20
Dimension : ø 87 x H 108 mm

BLACKMOON 10 - R

INT03101

CEILING MOUNTED



BLACKMOON 14 - R

INT03102

CEILING MOUNTED

System Power : 14 W
Luminaire Efficacy : 90 lm/W (@4000K, CRI 90)
UGR : <19
Beam Angle : 24°, 40°
IP Rating : IP20
Dimension : ø106 x H 140 mm



CEILING MOUNTED



BLACKMOON 8 - S

INT03103

CEILING MOUNTED

BLACKMOON 10 - S

INT03104

CEILING MOUNTED

System Power	: 8 W / 10 W
Luminaire Efficacy	: 90 lm/W (@4000K, CRI 90)
UGR	: <19
Beam Angle	: 24°, 40°
IP Rating	: IP20
Dimension	: 87 x 87 x H 108 mm



CEILING MOUNTED



BLACKMOON 8 II - S

INT03106

CEILING MOUNTED

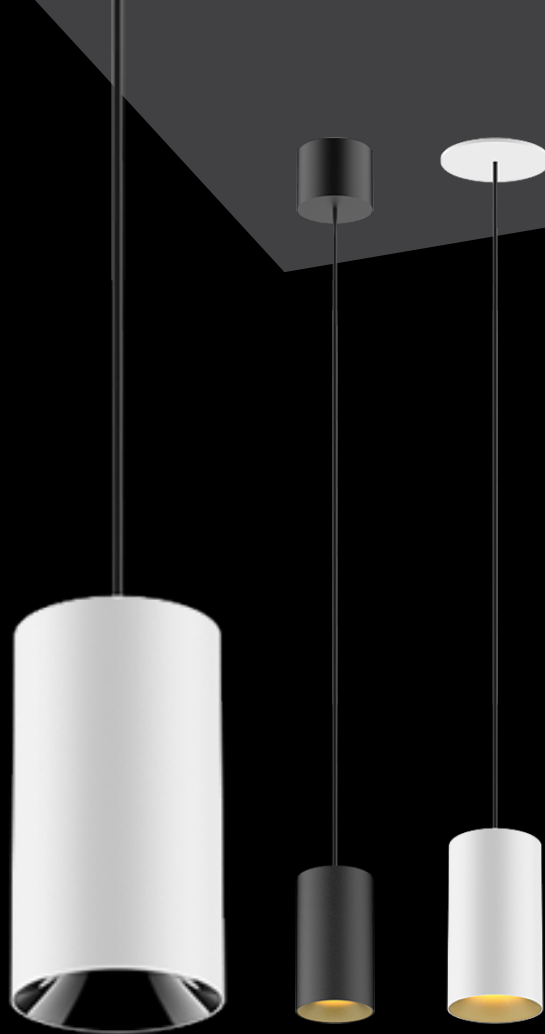
BLACKMOON 10 II - S

INT03107

CEILING MOUNTED

System Power	: 2 x 8 W / 10 W
Luminaire Efficacy	: 90 lm/W (@4000K, CRI 90)
UGR	: <19
Beam Angle	: 24°, 40°
IP Rating	: IP20
Dimension	: L 170 x W 87 x H 108 mm





S U S P E N D E D

SUSPENDED



BLACKMOON 8 SUSPENDED
INT03112

System Power : 8 W / 10 W
Luminaire Efficacy : 90 lm/W (@4000K, CRI 90)
UGR : <19
Beam Angle : 24° / 40°
IP Rating : IP20
Dimension : ø 60 x H 120 mm
Cutout : 55mm

BLACKMOON 10 SUSPENDED
INT03113

BLACKMOON 14 SUSPENDED
INT03024

System Power : 14 W / 20 W
Luminaire Efficacy : 90 lm/W (@4000K, CRI 90)
UGR : <19
Beam Angle : 24° / 40°
IP Rating : IP20
Dimension : ø 75 x H 140 mm
Cutout : 55mm

BLACKMOON 20 SUSPENDED
INT03025





Info@switch-made.com
www.switch-made.com